

PRESENTED BY
MR.GANESAN
PROFESSOR
ICON

Course : B.sc Nursing
Subject name : Mental health Nursing
Unit number : III
Title : Role & responsibilities of the nurse
Duration : 1 hour



Objectives

- ❖ introduction about roles of nurse
- ❖ meaning of psychiatric nurse
- ❖ describe about various roles and responsibilities of nurse

INTRODUCTION...

- Trends & issues in the health care system affect the roles of the psychiatric mental health nurse.
- Psychiatric nurses have traditionally worked on inpatient psychiatric units, they have continued to expand their role into the community.
- There are two levels of psychiatric-mental health nurses: The generalist (registered psychiatric nurse) & the specialist (CNS).
- The scope & roles of both are guided by nurse practice acts & by standards of care.

Definition

Definition of psychiatric nurse

A nurse who works on a psychiatric ward who is trained to work with patients with mental health needs.

- Psychiatric nursing or mental health nursing is the appointed position of a nurse that specialises in mental health, and cares for people of all ages experiencing mental illnesses or distress.

Role of the Generalist Nurse



- The psychiatric mental health generalist nurse is a licensed registered nurse for delivering primary mental health care.
- It incorporates both physical & mental health care.
- Generalist exercise a holistic approach to practice & performs psychiatric nursing in prevention programs, community & day treatment centers, psychiatric rehabilitation facilities, homeless, shelters & many other settings.

Role of the specialist Nurse...



- Psychiatric Clinical Nurse Specialist (CNS) holds a masters degree in psychiatric mental health nursing.
- CNS is an advanced practice nurse who is usually a primary health care provider, functions autonomously, often works in a semi-isolated situation, has medications prescription privileges (depending upon individual state laws), manages the overall care of people with emotional & psychiatric problem , & usually has a consultative arrangement with a psychiatrist.

Community Mental Health Nurse (CMHN)



Community mental health nursing is the application of knowledge of psychiatric nursing in preventing mental illness, promoting & maintaining mental health of the people.

- It includes early diagnosis, appropriate referrals, care & rehabilitation of mentally ill people.

Psychiatric Home Care Nurse..

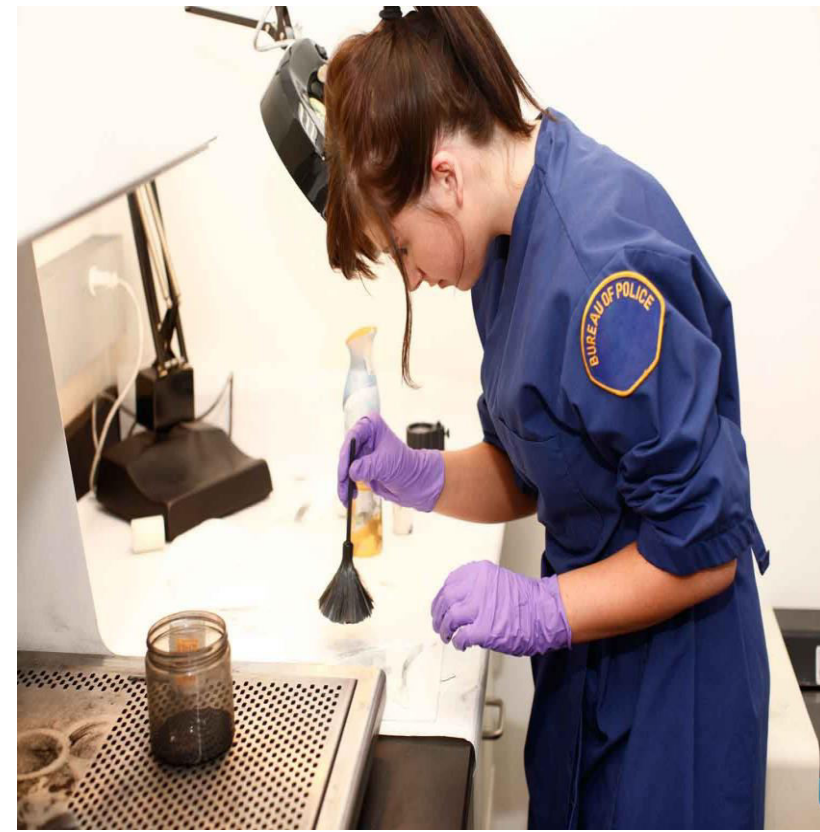


- Home health care is one aspect of community health nursing.
- Psychiatric home care nurses provide holistic psychiatric nursing care on a visiting basis to people needing assistance.

- These nurse provide comprehensive care, including
 - ❖ Psychiatric & physical assessment,
 - ❖ Direct nursing care,
 - ❖ Behavioural management,
 - ❖ Crisis intervention,
 - ❖ Psychoeducation,
 - ❖ In-home detoxification,
 - ❖ Medication management, case management & consultation with colleagues

Forensic Psychiatric Nurse...

- Forensic nursing is a growing specialty in other countries around the globe, especially in the UK, Australia, Germany, Japan & Canada, & it is an expanded scope of practice.



- The forensic psychiatric nurse works with individuals who have mental health needs & who have entered the legal system.
- Nurses in this role perform physical & psychiatric assessment & develop plans of care for the patients entrusted to their care.

Psychiatric Consultation – Liaison Nurse (PCLN)

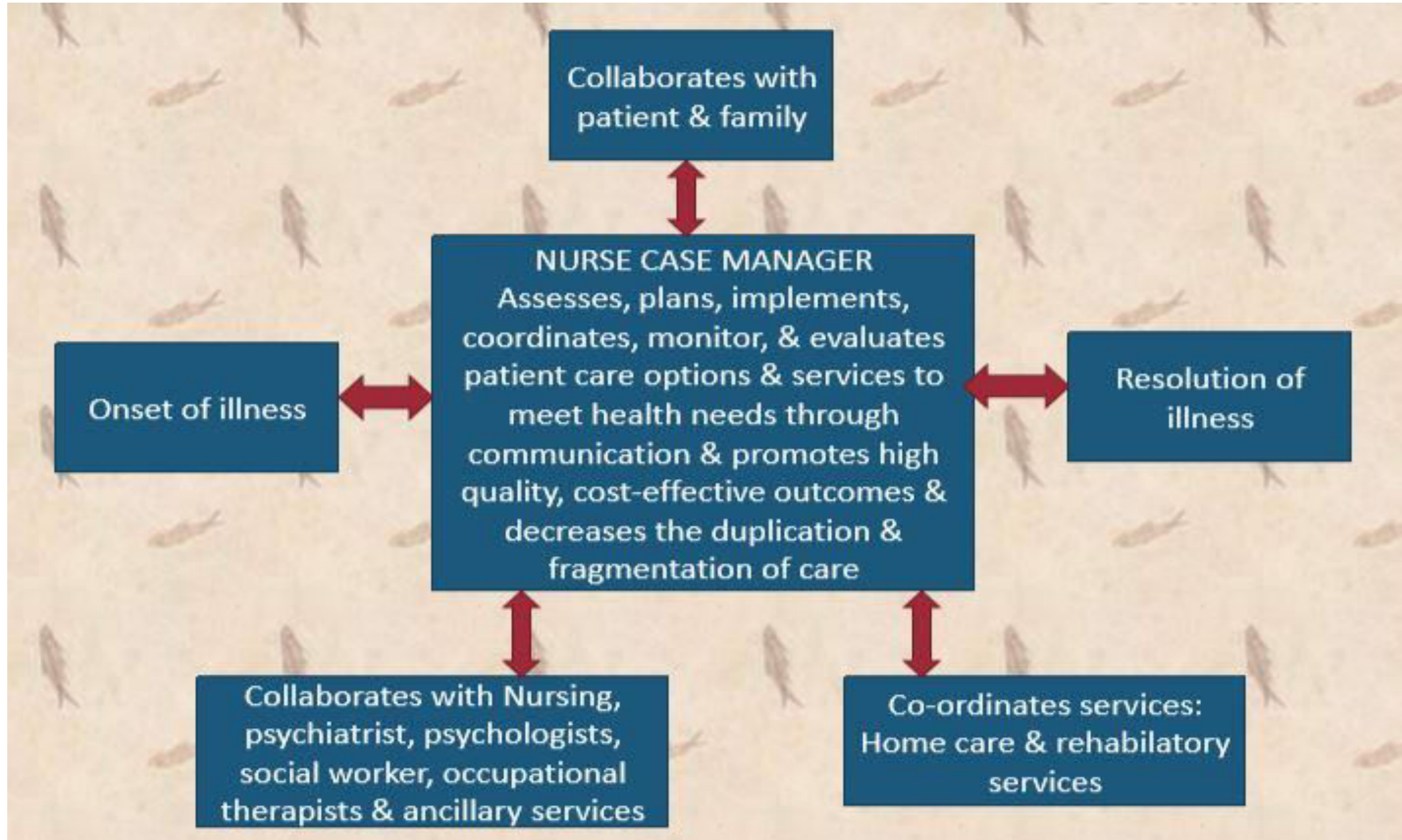
- PCLN has arisen in response to the increased recognition of the importance of psycho-physiological inter-relationships & their impact on physical illness, recovery & wellness.
- It is an advanced practice nurse who practices psychiatric & mental health nursing in medical setting/non-psychiatric setting providing consultation & education to patients, families, & health care team & the community.
- PCLN may provide assessment, recommendations & supportive therapy to patients who are anxious, depressed or experiencing other psychological problems or emotional distress.

Case Manager...



- Nurse case managers act as advocates for patients & their families by coordinating care & linking the patient with the physician, other members of the health-care-team, resources & payers.
- In the community, the case manager works with patients on a broad range of issues from accessing needed medical & psychiatric services to carrying out tasks of daily living such as using public transportation, managing money & buying groceries.

Case management model



Factors that indicate the need for a nurse case manager include :

- A complex treatment plan that requires co-ordination
- An injury or illness that may permanently prevent the patient from returning to a previous level of health
- Pre-existing medical condition that may complicate or prolong recovery
- A need for assistance in accessing health-care resource
- Environmental stressors that may interfere with recovery

- Case management can be provided by an individual or a team.
- It may include both face-to-face & telephone contact with the patient, as well as contact with other service providers.
- One of the most valuable assets case managers possess is their ability to synthesize patient data & act as conduits between patients & the health care system.

Geropsychiatric Nurse...

- Geronursing is expanding the psychiatric nursing practice to aged people who have been affected by emotional & behavioural disorders such as dementia, chronic schizophrenia, delirium, etc.



Parish Nurse...

- Parish nursing is a program that promotes health & wellness of body, mind & spirit.
- The parish nurse is a pastorally called, spiritually mature, licensed registered nurse with desire to serve the members & friends of his or her congregation.
- In 1998 the APA recognized parish nursing as a specialty focusing on disease prevention & health promotion.
- It is a non-invasive type of nursing in which no hands-on nursing care is provided

Telehealth / Tele nurse...



- Nurses engaged in telenursing practice use technologies such as internet, computers, telephones, digital assessment tools & tele monitoring equipment to deliver nursing care.
- In India around 10 hospitals are having telemedicine departments.
- For example, at Apollo hospitals, Narayana Hrudayalaya & Hosmat hospital at Bengaluru

Nurse Researcher...



- Nurse researchers are scientists who seek to find answers to questions through methodical observations & experimentation.
- They design studies, conduct research & disseminate findings at professional meets & in peer reviewed journals.
- They are doctor ally or post- doctorally prepared persons who initiate or participate in all phases of the research process.

Psychiatric Nurse Educator...



- The psychiatric nurse educators works in educational institutions, staff development department of health care agencies, patient education department (teach the mentally ill patients & their families about care to provide at home).
- Another function of nurse educator in planning & changing the curriculum planning according to the needs of the society & learner.

Nurse Administrator / Manager...

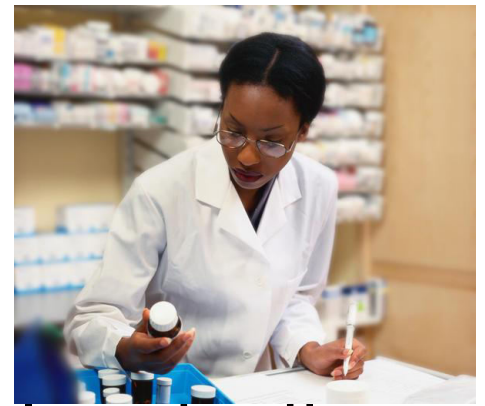


- A nurse manager works less directly with patients, but has the responsibility to provide nursing leadership to ensure that an appropriate therapeutic milieu is maintained.
- A key responsibility is the support & development of nurses, representing nursing views to senior managers.
- Nurse Manager plays an important role in negotiating & allocating nursing resources within clinical directorates

Psychiatric nurse as collaborative members of the interdisciplinary team...

- Collaboration implies a commitment to common goals, with shared responsibility for the outcome of care.
- It also implies helping to facilitate the mental health of the patient, family or community within the context of the treatment team.
- Nurses bring their own specialized knowledge to the treatment process
- Seven characteristics of effective collaboration includes: trust, respect, commitment, co-operation, co-ordination, communication & flexibility

Nurse Psychopharmacologist...



- One of the latest roles is that of the nurse psychopharmacologist – the psychiatric clinical nurse specialist with prescriptive authority.
- The new opportunities for psychiatric nursing practice that are emerging throughout the continuum of mental health care exciting for the specialty.
- They allow psychiatric nurses to demonstrate their flexibility, accountability, & self direction as they move forwards into these expanding areas of practice.

Conclusion

- In order to employ empathy with patients, a psychiatric Nurse needs to have excellent interpersonal skills. They also need to be a great listener and know where the patient is coming from, drawing on personal experiences if they have not been in a similar situation themselves.

Reference

- Townsend – Psychiatric Mental Health Nursing,2007.F.A.Davis
- Kaplan – Kaplan & Sadock's Synopsis of Pyschiatry,2007,LWW
- Sreevani – Psychiatric Mental Health Nursing,2008,Jaypee

Evaluation

Assignment

1x15mark = 15

1. Write assignment about various role of psychiatric nurse.



thank you!